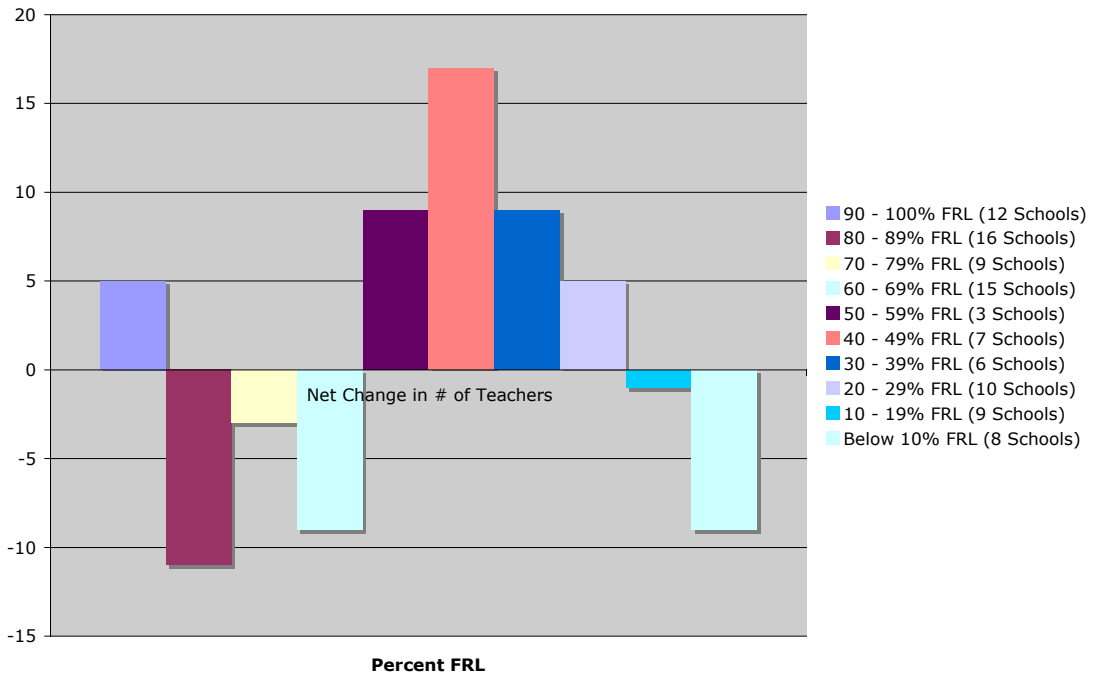
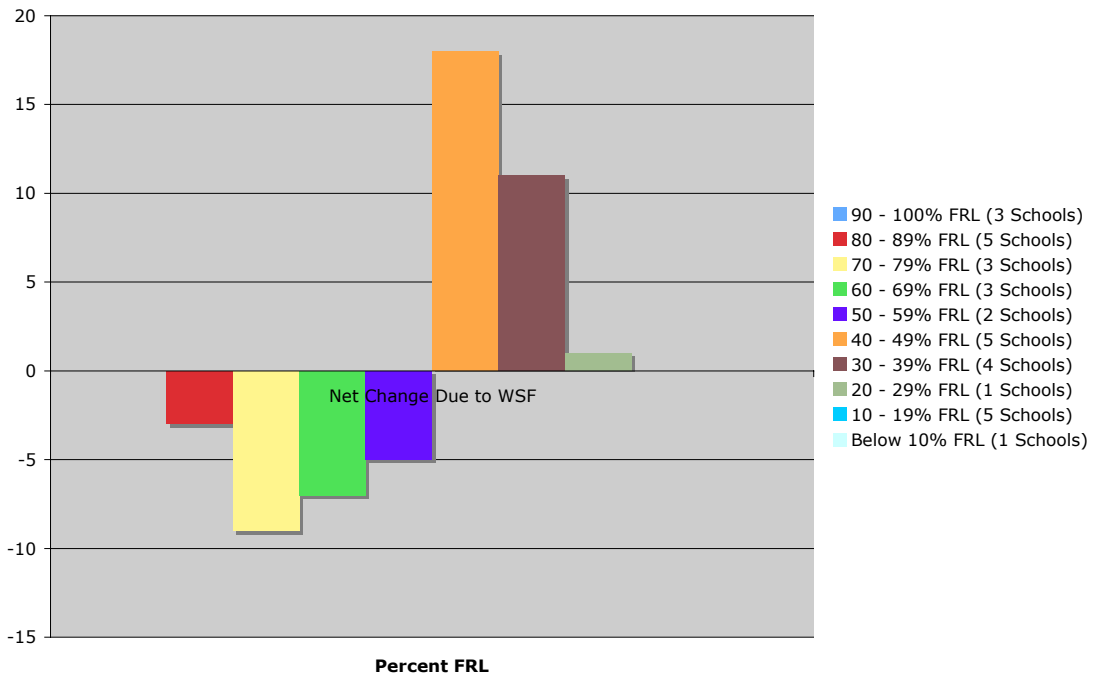


**Elementary: Net change in teacher allotments due to WSS**

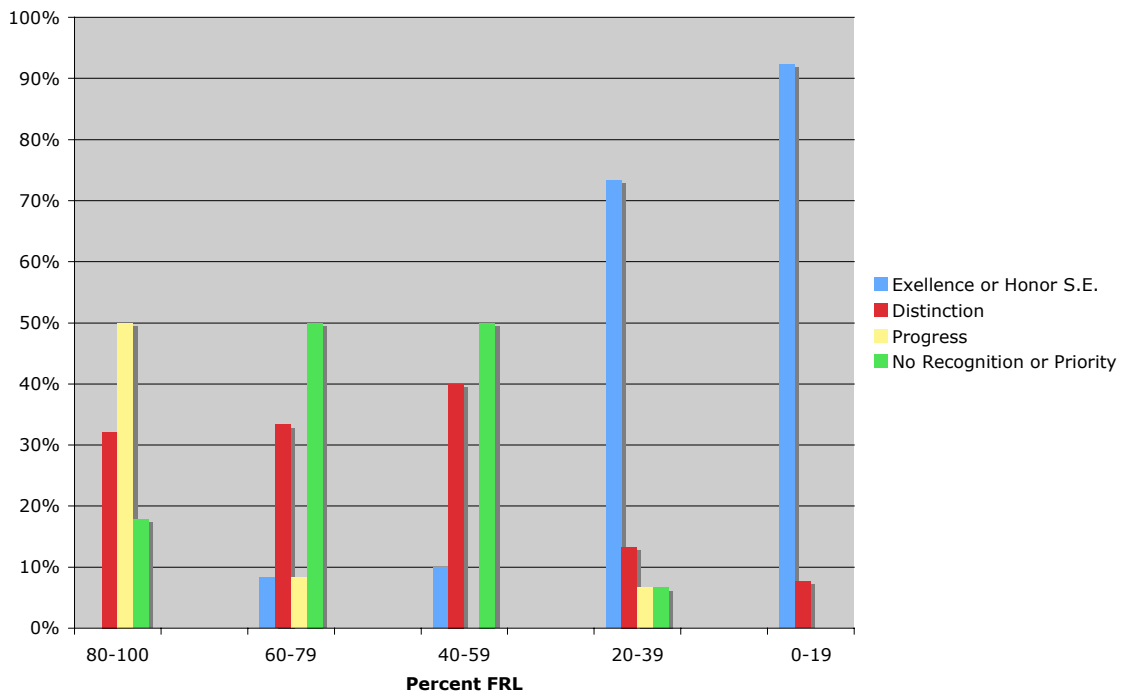


**Middle School: Net change in teacher allotments due to WSS**

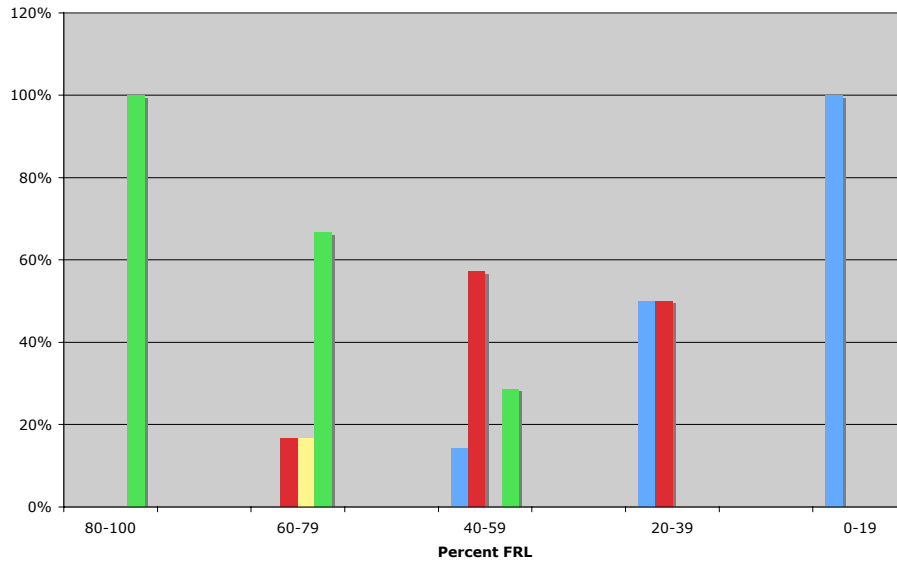


Changes from 2005-06 to 2006-07 school year

### Elementary Achievement (2004-05 data)



**Middle School Achievement (2004-05 data)**



**NC ABCs of Public Education Categories & Criteria**

Honor School of Excellence – 90% on grade level, met growth goal, made Adequate Yearly Progress

School of Excellence – 90% on grade level, met expected growth

School of Distinction – 80-89.9% on grade level, met expected growth

School of Progress – 60-79.9% on grade level, met high growth or expected growth

Priority School – 50-59.9% on grade level (regardless of growth) OR less than 50% on grade level that met expected growth

No Recognition – 60-100% on grade level, less than expected growth.